

Job Name/Location:

Tag No.:

Date:

For:	File	Resubmit
	Approval	Other_____

PO No.:

Architect: _____ GC: _____

Engr: _____ Mech: _____

Rep: _____
(Company) (Project Manager)



LS303HLV3

Single Zone DUAL COOL Extended Piping Wall Mount

Outdoor Unit (ODU) - LSU303HLV3, Indoor Unit (IDU) - LSN303HLV3

Performance:

Cooling:

Cooling Capacity (Min~Rated~Max) (Btu/h)	3,070~30,000~34,000
SEER2	20.5
EER2	11.3

SEER - Seasonal Energy Efficiency Ratio EER - Energy Efficiency Ratio

Heating:

Heating Capacity (Min~Rated~Max) (Btu/h)	3,070~32,400~38,900
HSPF2	7.9
Max. Heating @ Indoor 70°F DB	
Outdoor 17°F WB	32,500 (100%)
Outdoor 5°F WB*	28,080 (88%)
Outdoor -4°F WB	24,390 (75%)

HSPF - Heating Seasonal Performance Factor
* The Capacities at 5°F does not refer to H42 testing conditions.

Cooling Nominal Test Conditions: Indoor: 80°F DB / 67°F WB Outdoor: 95°F DB / 75°F WB
Heating Nominal Test Conditions: Indoor: 70°F DB / 60°F WB Outdoor: 47°F DB / 43°F WB

Outdoor Unit:

MOP (A)	30
MCA (A)	23
Cooling / Heating Rated Amps (A)	15.35
Compressor (A)	15.1
Fan Motor (A)	0.25

MOP - Maximum Overcurrent Protection MCA - Minimum Circuit Ampacity

Total Power Input:

Cooling Power Input (kW)	2.66
Heating Power Input (kW)	2.75

Piping:

Liquid Line (in., O.D.)	ø3/8 Flare
Vapor Line (in., O.D.)	ø5/8 Flare
Additional Refrigerant (oz./ft.)	0.38
Min. / Max. Pipe Length (ft.) ²	9.8 / 164
Piping Length (no add'l refriger., ft.)	24.6
Max. Elevation (ft.)	98.4

Features:

- 24-Hour on/off timer
- 4-Way auto swing
- Auto changeover
- Auto restart
- Jet cool/Jet heat
- Built-in low ambient standard, down to 14°F (cooling mode)
- Condensate Sensor Connection
- Inverter (variable speed compressor)
- Smart Diagnosis
- Washable Filter
- Self-cleaning indoor coil
- Built-in base pan heater
- Built-in Wi-Fi via Smart ThinQ app

Optional Accessories:

- MultiSITE™ CRC2 - PREMTBVC2
- Programmable Remote Controller - PREMTB100
- Delux Remote Controller - PREMTB200
- Dry Contact 3rd Party Thermostat - PDRYCB320
- AC Smart 5 - PACS5A000
- Low Ambient Kit -40°F cooling PQCA0, PAG-HS6/PAG-HS7 Wind Guards
- Without PQCA0 Cooling to 0°F

For a complete list of available accessories, contact your LG representative.
For continual product development, LG reserves the right to change specifications without notice.
© LG Electronics Canada, Inc., North York, ON. All rights reserved. "LG Life's Good" is a registered trademark of LG Corp. /www.lgdfs.ca

Operating Range:

Outdoor Unit:

Cooling (°F DB)	14 ~ 118
Heating (°F WB)	-4 ~ +65

Indoor Unit:

Cooling (°F WB)	53 ~ 75
Heating (°F DB)	64 ~ 86

Electrical:

Power Supply (V/Hz/Ø)	208-230/60/1
-----------------------	--------------

System Data:

Refrigerant Type	R410A
Refrigerant Control	EEV
Refrigerant Charge (lbs.)	5.291
ODU Sound Pressure (Cooling / Heating) (±1 dB[A]) ³	55 / 58
IDU Sound Pressure Cooling (H/M/L/Sleep) (±1 dB[A]) ³	51 / 47 / 43 / 33
Heating (H/M/L) (±1 dB[A]) ³	51 / 47 / 43
ODU Net / Shipping Weight (lbs.)	147.9 / 160.3
IDU Net / Shipping Weight (lbs.)	40.8 / 48.9
Heat Exchanger Coating	GoldFin™

Fan:

ODU Type	Propeller
IDU Type	Cross Flow
Fan Speeds (Fan/Cool/Heat)	6 / 6 / 6
Quantity (ODU + IDU)	1 + 1
Motor/Drive	Brushless Digitally Controlled/Direct
ODU Max. Air Flow Rate (CFM)	2,295
IDU Air Flow Cooling, Max/H/M/L (CFM)	1,095 / 883 / 742 / 601
Heating, Max/H/M/L (CFM)	1,166 / 954 / 813 / 671
Dehumidification (pts./hr.)	5.49

Notes:

1. Acceptable operating voltage: 187V-253V.
2. Piping lengths are equivalent.
3. Sound Pressure levels are tested in an anechoic chamber under ISO Standard 3745.
4. All communication / connection (power) cable from the outdoor unit to the indoor unit is field supplied and must be a minimum of four-conductor, 14 AWG, stranded, shielded or unshielded (if shielded, it must be grounded to the chassis of the outdoor unit only), and must comply with applicable local and national codes.
5. See Engineering Manual for sensible and latent capacities.
6. Power wiring cable size must comply with the applicable local and national code.
7. The indoor unit comes with a dry helium charge.
8. This data is rated 0 ft. above sea level, with 24.6 ft. of refrigerant line and a 0 ft. level difference between outdoor and indoor units.
9. Must follow installation instructions in the applicable LG installation manual.



Job Name/Location: _____

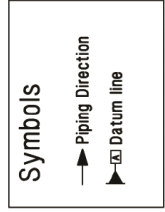
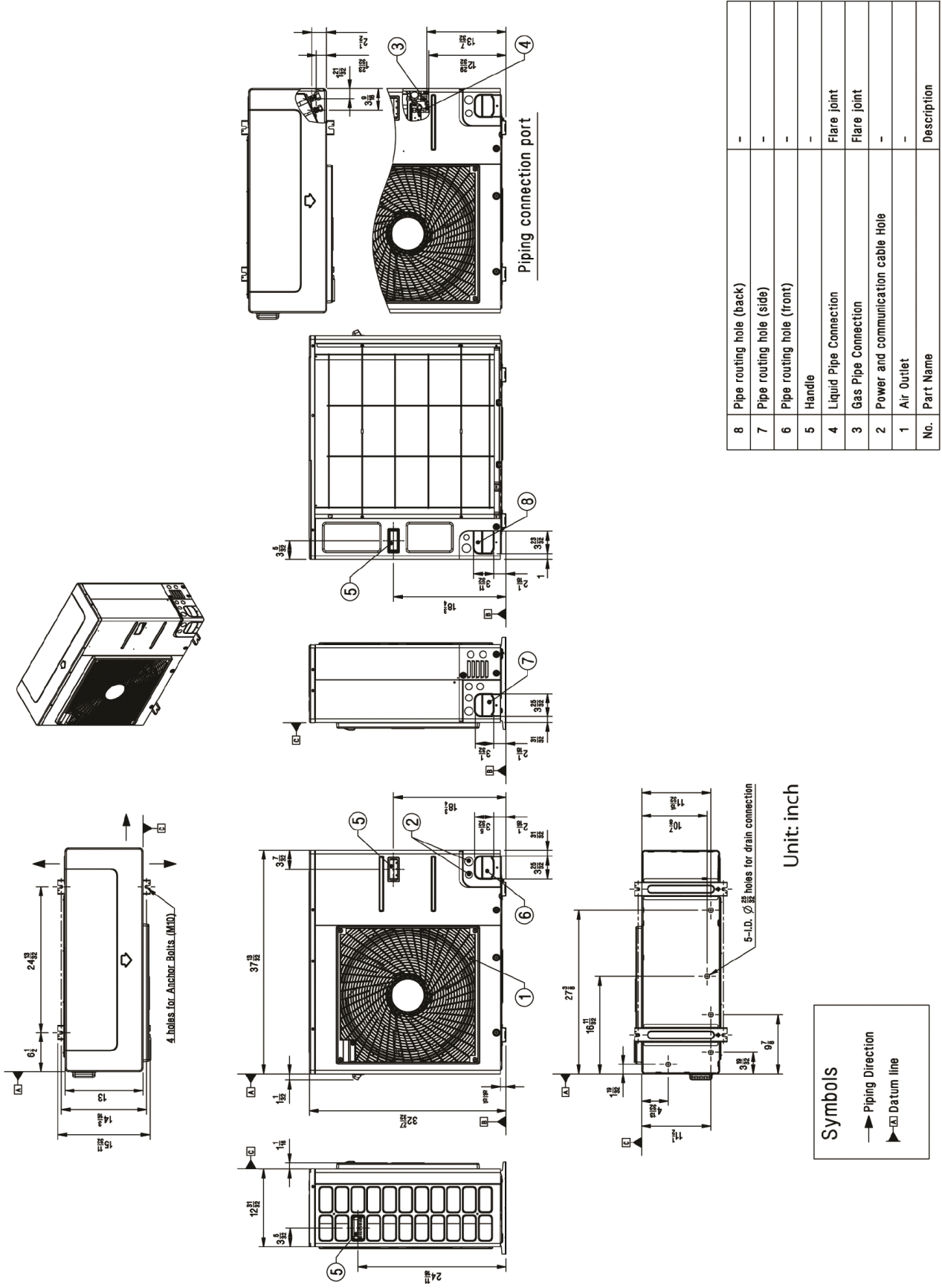
LS303HLV3
 Single Zone DUAL COOL Extended Piping Wall Mount
 Outdoor Unit (ODU) - LSU303HLV3, Indoor Unit (IDU) - LSN303HLV3



Tag No.: _____

Date: _____

PO No.: _____



Unit: inch

LS303HLV3
 Single Zone DUAL COOL Extended Piping Wall Mount
 Outdoor Unit (ODU) - LSU303HLV3, Indoor Unit (IDU) - LSN303HLV3



Tag No.: _____

Date: _____

PO No.: _____

